

# BUSINESS INFORMATION

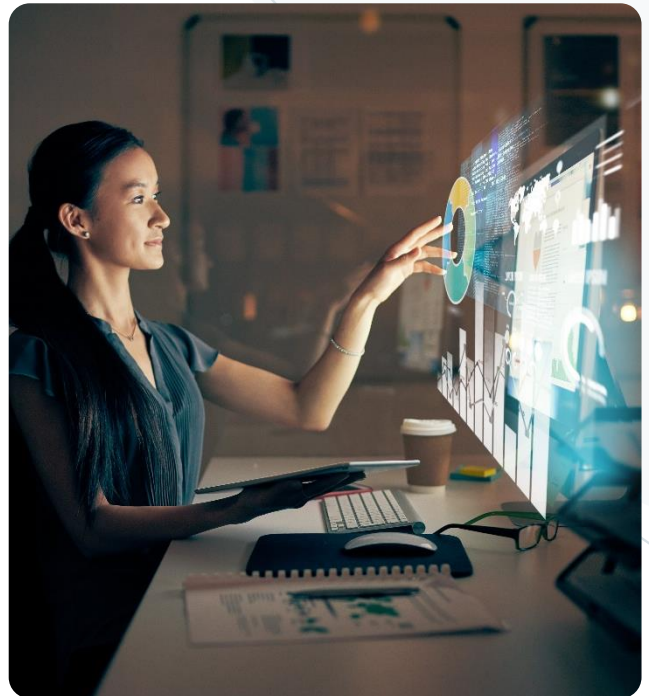
## EVERYTHING YOU NEED TO KNOW ABOUT THE iCON API

### WHAT IS iCON API?

The iCON API acts as a bridge to directly access Coface's credit risk information insights within your company applications.

### WHEN TO USE IT?

- › When managing large portfolios
- › When performing repetitive tasks such as ordering and searching
- › When you need tailored insights to suit your unique needs
- › When you have the resources, time, and budget to implement



### SECURITY YOU CAN TRUST

The API is secure with:

- › A special API keys
- › OAuth 2.0 Password Grant



### TECHNICAL SET-UP ASSISTANCE

Coface's team will support you from technical setup to ongoing support.



### WHY CHOOSE THE iCON API?

- › **Effortless Integration:** Integrate Coface's insights into your workflows without any disruption.
- › **Enhanced Productivity:** Automate tasks, schedule orders, and handle even the largest portfolios with ease.
- › **Round-the-Clock Access:** Access critical data and functionalities anytime, anywhere, ensuring you're always ahead of the curve.
- › **Daily Monitoring:** Receive alerts on companies that you're monitoring when a value changes.

### WHICH PRODUCTS ARE AVAILABLE ON THE iCON API?

- › Urba 360
- › Business Reports
- › Score
- › Credit Opinions
- › Late Payment Index

### CONNECTIVITY WITH THIRD PARTIES

Our microservice tools and connectors adhere to market standards (JSON format and RESTfull architecture).

- › Easy integration with ERP, CRM, and SCM systems.
- › For users of SAP S/4 HANA, you can use our SAP connector for the ERP and FSCM modules.